

# *Dosé*

## TECHNOLOGY WAX SYSTEM

Dosé represents an opportunity for change in the beauty industry.

Its exclusiveness and innovation contribute to both the definition of the professional activity of beauticians and to the improvement of the ranking of their occupation. These two elements are the beacons guiding customers towards a new aesthetic based upon care and awareness.

BEAUTY PARTNER

# Our *philosophy*

**To offer cosmetics assisting both operators and users in making conscious beauty decisions.**

We have always wanted to build a relationship based on continuity and trust, in which pleasantness and care would go hand-in-hand. **Dosé Beauty Partner enters family routine** and daily skincare with products and fragrances developed to achieve satisfying results. **The products are neat, designed for their function** and enriched with a formula proven to be effective and adding an enveloping note.

# Gently Water

Gentle refreshing water, rich in essential oils of rosemary, lavender, lemon-balm and chestnut, *silver citrate*.

Thanks to its remarkable sanitizing and lenitive properties, this product is suitable for all skin types, even that of children.

*Rinsing is not necessary.*

*It does not contain any surface-active agents, preservatives, or Glycerin.*



## ACTIVE COMPONENTS

**Rosemary:** *cleansing action*

**Lavender:** *refreshing action*

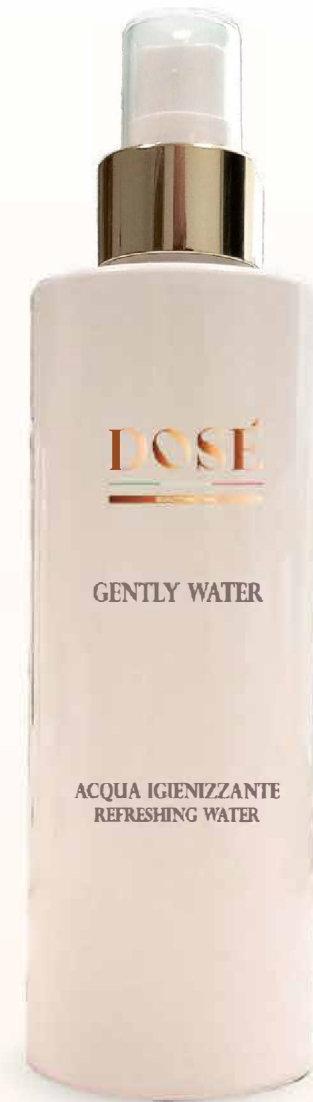
**Lemon-balm:** *lenitive action*

**Thyme:** *cleansing action*

**Helichrysum:**  
*moisturizing action*

**Great St. John's wort:**  
*softening action*

SILVER CITRATE



## Concept *self-care*

**Gentle refreshing water**, ideal for refreshing the face and the body and for the organic sanitation of hands. The presence of Lemon-balm and Helichrysum makes the product particularly suitable for changing diapers of children. It does not cause rashes and gives an immediate refreshing sensation, leaving the skin soft and delicately fragrant.

*While travelling and during the day, bring it always with you.*

---

### INFORMATION

*It is suited for cleansing sensitive areas.*

### INSTRUCTIONS FOR USE

*Spray on the areas of interest and distribute it on the skin by means of a cotton pad or a paper towel.*



# Silk Star

Fine body powder enriched with an enchanting flowery and delicate scent. The silk proteins are enriched with the keratolytic properties of papain, which act on the most superficial epidermal layers, renewing the skin and leaving it wonderfully smooth and firm.

The high absorbency makes the skin dry and silky, without clogging the pores. It is also suitable for private parts and can be used by the entire family.

It does not contain talc, scents or silicates.



## ACTIVE COMPONENTS

**Silk proteins:** *smoothing action*

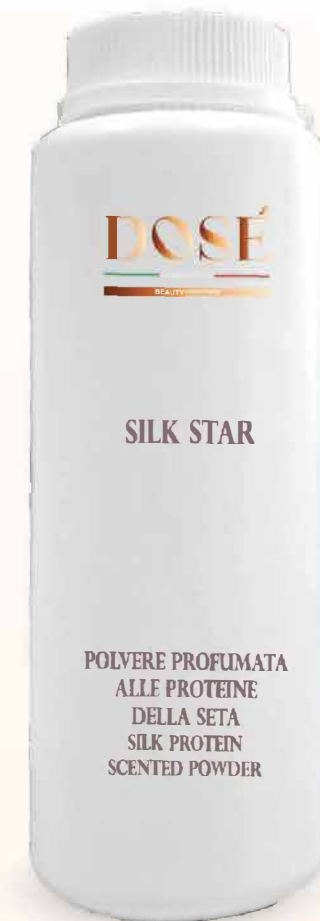
**Wheat starch:** *absorbing action*

**Corn starch:** *moisturizing action*

**Rice starch:** *deodorizing action*

**Silver citrate:** *anti-bacterial and anti-virus action*

Silk protein  
scented powder



## Concept *self-care*

The exquisite SILK STAR silk powder awakens the pleasure to spread a soft, enveloping and pleasantly scented veil on freshly washed skin. It represents **a great alternative to deodorants** for the application under the armpits and promotes a feeling of cleanliness thanks to its composition, without any contraindication. Its delicacy and the naturalness of the raw ingredients allow its use **even on newborn babies**. With respect to the feet, the application of the product before wearing stockings or socks allows to keep them dry, thus countering the buildup of odors.

---

### INFORMATION

It is a refined product with absorbing, deodorizing and keratoplasty action. To be used on the whole body, including armpits and private parts. It is an excellent product for sportspeople's feet.

### INSTRUCTIONS FOR USE

Apply on the areas of interest and tap with your fingertips.



# Treasure Complex



Restorative moisturizing fluid

It preserves the skin's natural beauty and gives an immediate sensation of well-being to both the face and the body.

**Pomegranate water** (HYDROLATE), a true treasure of phytochemicals essential for our skin's beauty, provides immediate refreshment preventing irritation and inflammation. **It is a strong antioxidant** that stimulates cell regeneration, leaving on the body and the soul a sensual fragrance that arouses the senses.

Thanks to **hyaluronic acid**, the product keeps the skin's right hydration, elasticity, and firmness, reviving its radiance.

It is enriched by the well-known formula SKIN SAVE TM, i.e., a blend of three extracts, designed to act on sensitive skin with a triple action:

#### RESTORATIVE

*Restorative and immunostimulant activity*

#### LENITIVE

*Lenitive and calming effect due to olive tree's biophenols*

#### MODULATING

*Thanks to the polysaccharides of Opuntia ficus-indica*

#### DESENSITIZING

*Desensitizing effect connected with flavonoids of the Capparis spinosa plant*

Thanks to these actions, Skin Save® is effective in inhibiting skin damages induced by excessive exposure to the Sun, heat burns, radiotherapy, insect bites and jellyfish stings.

***An exceptional product for cosmetic use, suitable for the whole family.***







## ACTIVE COMPONENTS

**Punica granatum  
(pomegranate):**

*antioxidant, multivitamin*

**Hyaluronic acid:**

*moisturizing and elasticizing  
action*

**Glucan:**

*antioxidant, it stimulates and  
accelerates cell regeneration*

**Silk proteins:**

*moisturizing and softening  
action*

**Hamamelis:**

*lenitive and astringent action*

**Silverion 2400:**

*cleansing action*

**Skin save extract:**

*anti-reddening and  
anti-inflammatory action*

**Zingiber (ginger):**

*stimulating and firming  
action*

# Concept *self-care*

*This product is a great support in the booth for all the treatments for which it is necessary to repair and soothe the face and body skin.*

*As a post-epilation product to restore the correct skin balance, it provides an immediate feeling of refreshment and peace to the skin, both post-waxing or after a laser treatment.*

## *Great after the shower for the skin of the whole family!*

*It moisturizes the skin, leaving it dry.*

*While being versatile with respect to the application, it envelops the body and the mind with a wonderful positive feeling. It represents the quintessential after-sun product, which leaves the skin silky and enhances the tan with a radiant reflection.*

### INFORMATION

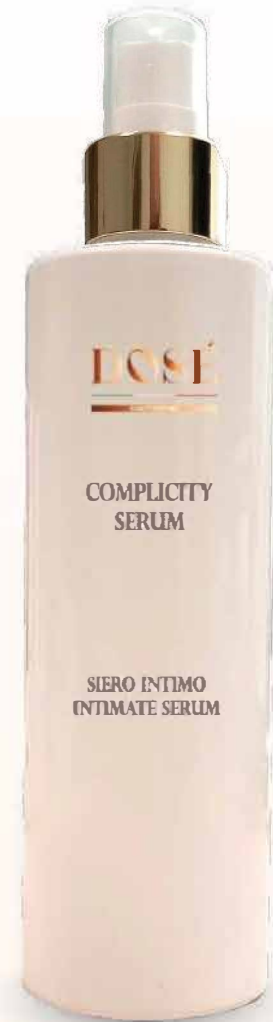
*For dehydrated, hypo-nourished, asphyxiated, irritated and reddened skin subject to both endogenous and exogenous stress.*

### INSTRUCTIONS FOR USE

*Distribute evenly on the skin, then rub it until the product is completely absorbed. Do not rinse.*

# Complicity *Serum*

Contributing to intimate wellbeing. It is a product to keep in your purse to face situations of sudden discomfort or to simply treat yourself with a pleasant refreshing moment.



Intimate serum

DOSE

BLOW OF FOAM

# Blow of *Foam*

Based on a lenitive and protective **prebiotic action**.  
It strengthens and protects the microbiota, giving  
immediate relief from burning and itching.

*It is an effective ally in the case of total intimate  
epilation.*

Intimate cleanser



DOSE | OUR PRODUCTS



## ACTIVE COMPONENTS

### **Matricaria chamomile:**

*lenitive, decongesting, and anti-inflammatory action*

### **Clary sage:**

*anti-inflammatory and antimicrobial action. It repairs skin tissue. It has strong antibiotic and antiseptic action, which make it a powerful natural disinfectant.*

### **Lactic acid – silver citrate:**

*our formula which has been studied to suppress and destroy any potential pathogens. The lactic acid, already present in intimate tissues, promotes pH correction and the growth of natural microorganisms of the vaginal flora*

### **Igroderm NMF:**

*moisturizing natural factor made of a composition of natural hydroxy acids and amino acids. In everyday use, it keeps the correct level of humidity, softness, and acidity.*

# Concept *self-care*

*Essential product for daily routine, appreciated and suitable for the intimate hygiene of the whole family.*

**The prebiotic action**, together with the decongestant properties of its active components, make it a **trusted** cosmetic ally during menopause and through the menstrual period.

---

## INSTRUCTIONS FOR USE

*The foamers dispenser allows the transformation of a water-based liquid into a foam, diminishing the quantity of surfactants needed for getting a soft and compact foam, improving skin hydration.*

# Longer free



*Revolutionary serum* that makes use of the **LIB- Lauryl isoquinolinium Bromide** proteolytic substance, created by dermofunctional biotechnology for slowing down the hair growth phase. It has been widely demonstrated that its use leads to a reduction of hair regrowth up to **35 %**, extending the interval between two consecutive epilation treatments.

Ananas enzymes drastically reduce the risk of post-epilation folliculitis generation. Regular use leads to a substantial hair thinning and lightening.

**Mandelic acid** ensures deeper penetration and a higher hydration level of the proteolytic enzymes.



## ACTIVE COMPONENTS

### **Lauryl isoquinolinium bromide**

**(LIB):** *it slows down hair regrowth and causes shaft thinning*

### **Hop extract, saw palmetto:**

*rich in phytoestrogens, useful for improving skin trophism and slowing down hair regrowth.*

### **Eucalyptus and aloe:**

*cleansing and lenitive action.*

### **Bromelain and papain**

**cyclosomes:** *anti-reddening, lenitive, anti-edemigenous action. They slow down hair regrowth.*

**Lactic acid:** *it belongs to the hydroxy acids' family. It is indicated for its keratolytic action. It limits the formation of keratotic caps and ingrown hair formation.*

### **Caffeine:**

*it increases and accelerates the penetration and the oxygenation of proteolytic enzymes*

### **Papain:**

*keratolytic, anti-inflammatory and anti-septic action. It acts on the follicle, slowing down hair growth and reducing its thickness*

### **Ananas enzymes (bromelain):**

*they have keratolytic properties, which act on the protein structures of hair root, reducing its activity and thus delaying regrowth and weakening the hair itself. They reduce swelling and protects the vessels stimulated by the rip, preserving them from skin reactions (folliculitis). They extend the treatment effect, keeping the skin smooth for several more days.*

### **INSTRUCTIONS FOR USE**

*Dispense few drops directly on the freshly shaved zone and wait till complete absorption. It can also be added to the moisturizing product for the post-epilation phase. It optimizes and refines its action if used for at least 15 consecutive days after epilation, irrespective of it being with waxes or laser, thus contributing to exceptional outcomes in permanent epilation programs.*

